

Compact Valve Automation



sales@valvsys.com

www.valvsys.com

513.870.1234



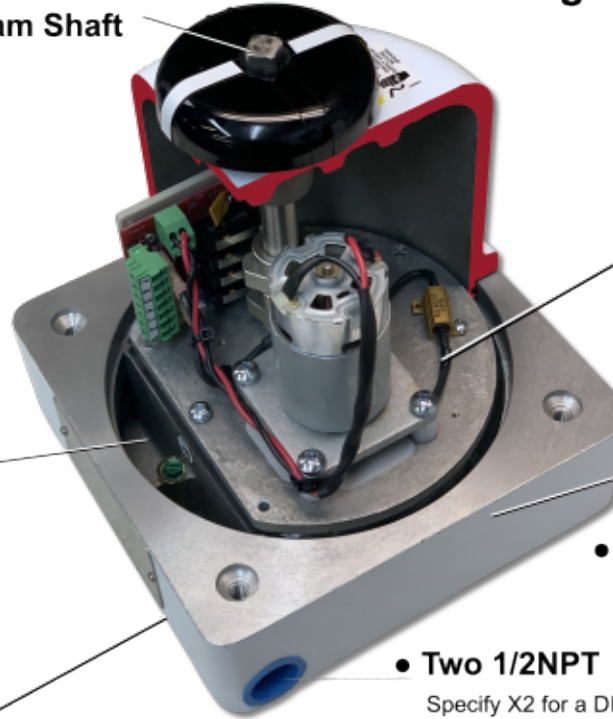
Explosion-proof

Nema 4,4X,7,9 Housing

Quarter turn automation

350 - 1500inlbs

- Stainless Steel Cam Shaft



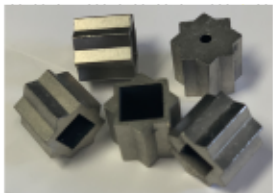
- Heavy Duty PSC AC Motors

Also, 12/24 vdc motors. And 230Vac, 24Vac, 24Vdc brushless.

- High Strength Alloy Steel Gears

- Potting

Optional sealed leads prevents ingress of moisture through the conduit entry.



Inserts for direct mounting

- ISO 5211 Mounting Pad F05-F07

Standard mounting means direct mount of ISO valves.

- Optional servo control.

Allows for positioning between 0 and 90°. 4*20mA or 0-10Vdc inputs.

- Optional heater / thermostat

Helps prevent condensation buildup inside the actuator during outdoor applications.

- Stainless Steel Cover Bolts

- Cast Aluminum Base with corrosion undercoat

- Cams Allow 90°-270° Rotation

- Ball Bearing Reliability

Ball bearings on both the upper and lower AC motor shaft provide greater reliability than plain bearings do.

- Two 1/2NPT

Specify X2 for a DIN connector.

- Ideal for ball valve automation.

Paired with your favorite ball valve, the XV series is a perfect replacement for most solenoid valve applications that require more flow.

- Relays, sensors, feedback....

Check out the "solutions" page on our website for the many options we can add to your automation process.

- The XV series is designed* to meet the requirements of:
Class I Grps C, D div 1,2
Class II Grps E, F, G div 1,2



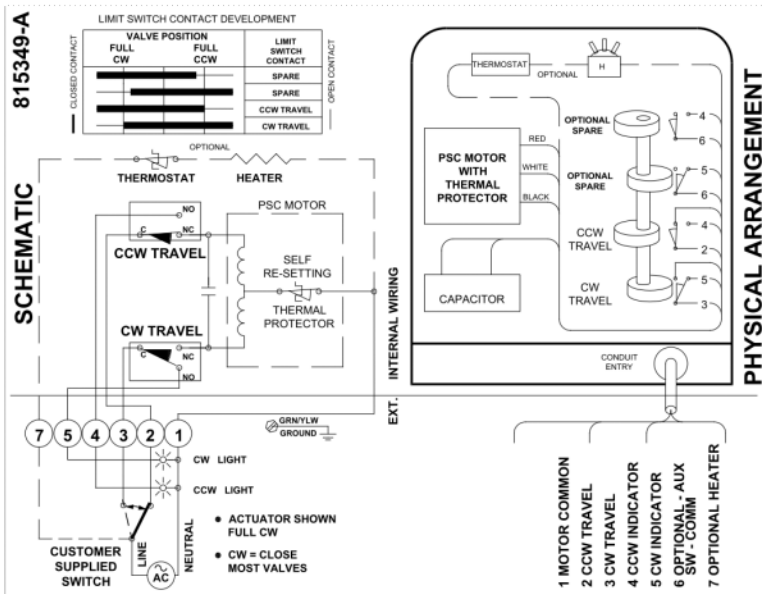
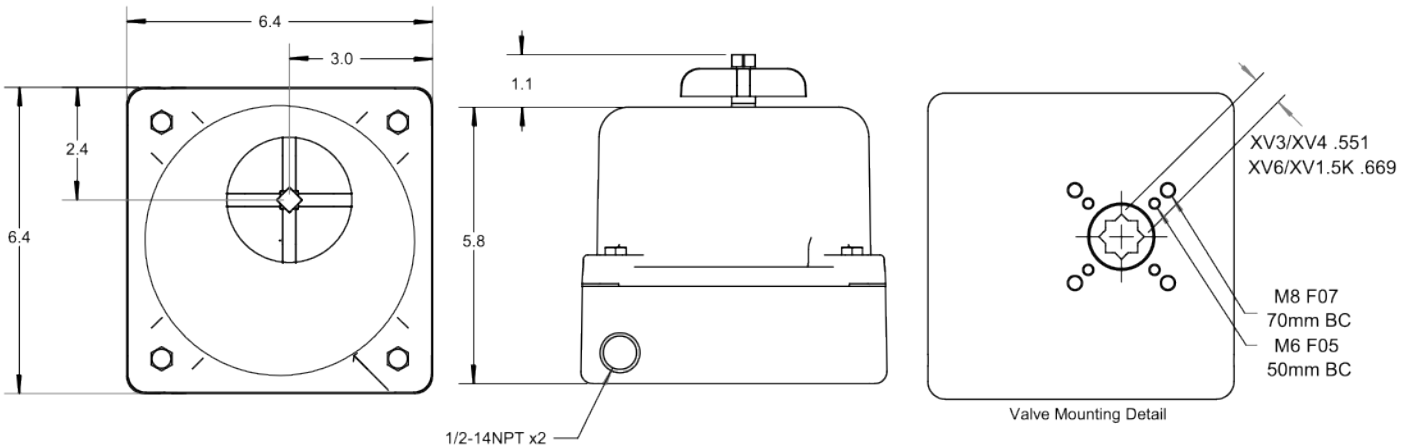
Compact Valve Automation

sales@valvsys.com

www.valvsys.com

513.870.1234

Model	Output Torque		Speed Sec/90°			Current Amps			Weight	
	in-lbs	N-m	115Vac	12vdc	24vdc	115Vac	12vdc	24vdc	Lbs	Kg
XV3	350	40	5	5	5	0.6	1.6	1	9	4
XV4	425	54	5	5	5	0.6	1.6	1	9	4
XV6	625	71	11	11	11	0.6	1.6	1	9	4
XV7	725	82	11	11	11	0.7	1.6	1	11	5
XV1K	1000	114	11	11	11	0.9	1.8	1.4	11	5
XV1.5K	1500	170	30	30	30	0.5	2	1.6	12	5



XV - HOW TO ORDER

Optional Adders*
 XV 1K S1 V1 C2 T1 H1

Extra Options

Torque

- 3 = 350inlbs (39Nm)
- 4 = 475inlbs (54Nm)
- 6 = 625inlbs (71Nm)
- 7 = 725inlbs (82Nm)
- 1K = 1000inlbs (114Nm)
- 1.5K = 1500inlbs (170Nm)

Duty Cycle

- S1 = 75% } AC Motors
- S2 = 25%
- S3 = 100% - DC Motors

Supply Voltage

- V1 = 120Vac
- V3 = 230Vac
- V7 = 24Vac
- V8 = 12Vdc
- V9 = 24Vdc
- V21 = 24Vdc brushless

*Not all options are mutually compatible.

Control/Feedback

- P1 = 1k potentiometer
- P2 = 5k potentiometer
- P3 = 10k potentiometer
- R1 = cycle length control
- R3 = time delay
- R30 = 30 sec cycle time
- T1 = 4-20mA servo
- T3 = 3 position

Switches

- C2 = two extra dry contact switches
- C4 = four extra dry contact switches

example: XV1KS3V9C2T1H1J2
 XV series, 1000inlbs, 24Vdc, 100% duty, two extra switches, 4-20mA servo, heater, sealed leads

Typical AC actuator wiring. Check inside the actuator cover as your wiring may be different.